



DOOR & WINDOW IRONMONGERY

October 2024

www.hardwick.co.uk

FINEST BRASSWARE TO ENHANCE QUALITY DOORS AND WINDOWS

www.hardwick.co.uk

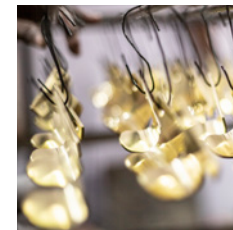


www.hardwick.co.uk

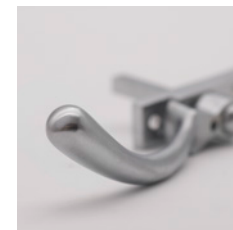
Contents



03 Introduction



05 Finishes



07 Lyndon Classic Range



09 Burley Classic Range



11 Cottesmore / Accessories Classic Range



13 Ayston Classic Range

15 Ryhall / Hambleton Classic Range

17 Sash Hardware Classic Range

19 Sentry+ 3* Euro Cylinders

21 Burley Heritage Range

23 Brooke / Curlytail / Peardrop Heritage Range

25 Ayston Heritage Range



Since 1984, GBS Joinery has been a cornerstone in joinery manufacturing, delivering unparalleled craftsmanship in handmade windows and doors. As we celebrate our 40th anniversary, we reflect on our journey of excellence and commitment to meeting each customer's unique needs.

Based in Stockport, we proudly serve clients across the northwest of England. Our expertise covers a wide range of properties, from the modest Victorian terrace to grand Villas reproducing the original style and detail to meet the historic architecture and the requirements of conservation areas, listed buildings, and National Parks.

At GBS Joinery, we understand that every home tells a story. Our skilled craftsmen take pride in preserving and enhancing that narrative through bespoke joinery solutions. Whether replacing existing features, renovating a period property, or starting a new build, we have the experience and knowledge to exceed your expectations.

We recognise the importance of maintaining the original character of period properties while incorporating modern performance standards. Our team collaborates closely with clients, architects and local planning authorities to ensure every project meets and surpasses aesthetic and functional requirements.

Quality is at the heart of everything we do. We use only the finest timbers, including Swedish Redwood, Douglas Fir, Mahogany, Oak, and the innovative Accoya. Our windows and doors are fitted with highly efficient Planitherm double glazing, exceeding current building regulations for energy efficiency. We also offer a factory-applied, low-maintenance paint system in a wide range of colours, perfectly matching your home's style. Our installation is handled by our own experienced fitters, who treat your home with respect and strive to minimise inconvenience maintaining a clean, tidy work environment at all times.

At GBS Joinery, we're not just craftsmen; we are partners in bringing your vision to life. We offer free expert advice and information to help you make informed decisions about your joinery needs. With four decades of experience, we look forward to continuing our tradition of excellence and helping you create the perfect windows and doors for your home.

Our premium selection of ironmongery from the Hardwick range allows matching finishes throughout sash windows, casement windows and doors.

Crafted from solid brass and available in 7 distinctive finishes to add a touch of timeless elegance to your doors and windows.

With over 3 decades of experience in the sector - you can be sure that the Hardwick range will provide the perfect ironmongery option to complement your joinery.

Handing:

There are LH and RH versions of some ironmongery products; use the below diagrams to determine which hand you require:

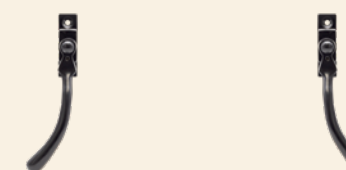
Door Handles (viewed from outside)



RIGHT HAND

LEFT HAND

Window Handles (viewed from inside)



LEFT HAND

RIGHT HAND

Finishes

Distinctive finishes are the hallmark of Hardwick ironmongery. Create your own statement look and we'll guarantee you can find a perfect match across the range.



Chrome Plated (CP)

Chrome Plated is a classic finish that is easy to wipe clean and maintains its sheen over time.

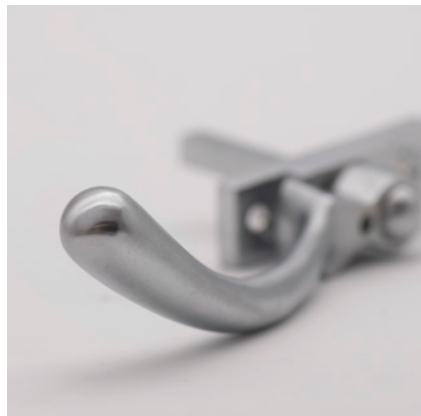
Highly polished, it has a cooler feel to it thanks to its silver tones and adds an opulent feel to doors and windows. Elegant with light paint colours or powerful with darker shades.



Polished Brass (PB)

Perfect for period properties, Polished Brass is a timeless choice for ironmongery. Its reflective finish will change subtly depending on the light in the room and it's perfect for providing a contrasting statement to darker paint colours.

The solid forged brass is carefully polished to an almost mirror-like shine and laquered to maintain the clean, crisp look.



Satin Chrome Plated (SCP)

Satin Chrome Plated exudes graceful charm as a subtle alternative to polished finishes. Its matte appearance brings a contemporary edge to classically designed hardware.

With its cooler monochromatic tones, Satin Chrome Plated ironmongery is a versatile design choice as it offsets bolder paint colours but still enhances neutral shades.



Antique Brass (AB)

Antique Brass is a finish that embraces tradition - evoking a stately effect to door and window hardware. It offers an elegant and classy finishing touch to period interiors; especially with lighter shades of paint.

Providing a refined finish, Antique Brass is textured in appearance to emulate a naturally aged product.



Satin Brass (SB)

A subtle alternative to Polished Brass, the textured finish of Satin Brass softens its reflectiveness, leaving a more muted colour.

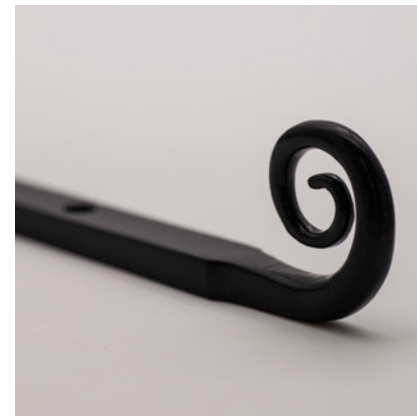
Its matte appearance brings a contemporary edge to classically designed hardware making it a very versatile finish choice to complement a wide range of paint colours.



Trojan Bronze (TB)

Inspired by the legendary events of the Trojan war, bronze is an extremely durable metal historically used for weapons and armour. It also provides an attractive finish for ironmongery for period or contemporary properties.

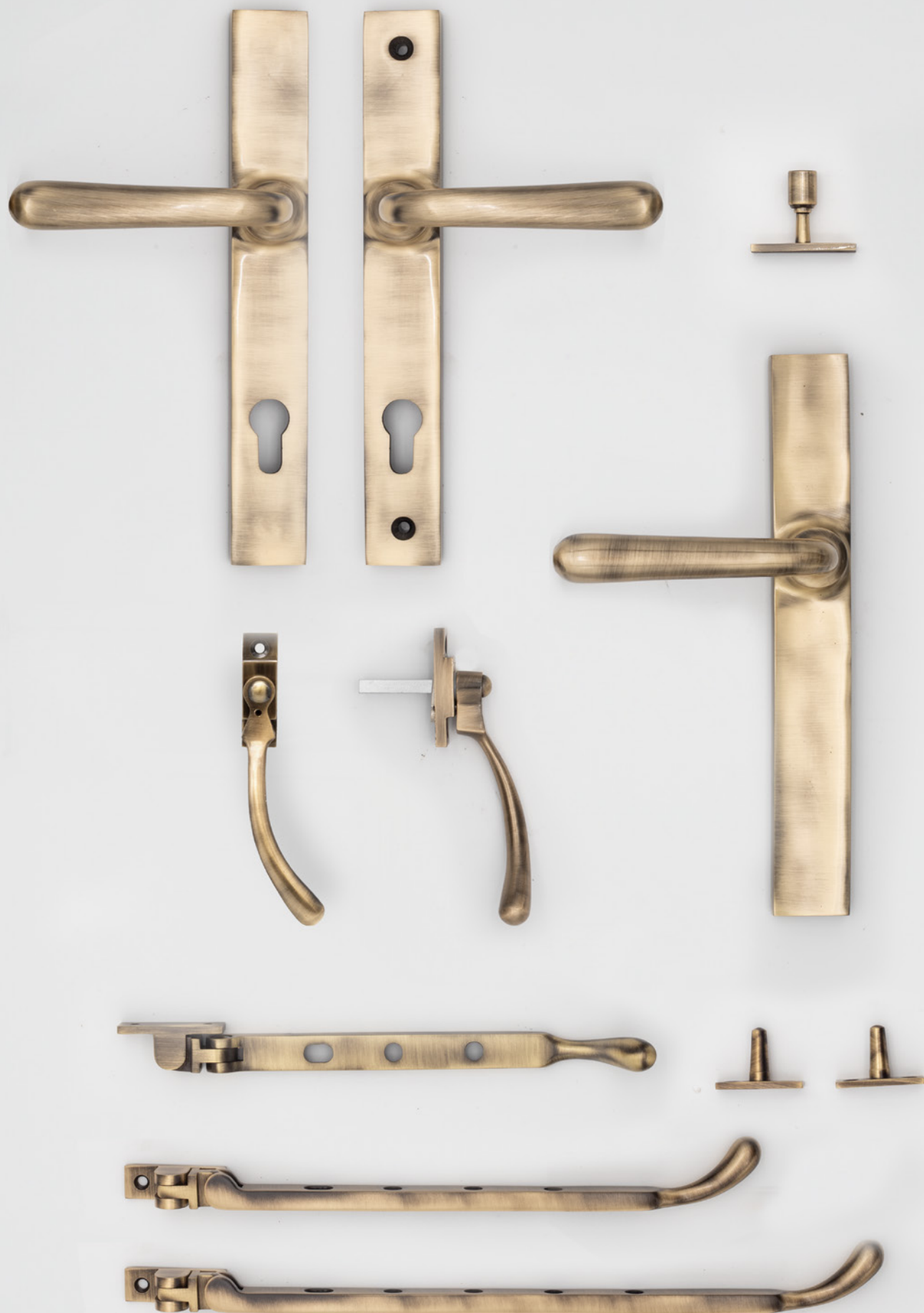
The dark gunmetal-like tones have a touch of warmth which makes Trojan Bronze a great alternative to pewter hardware.



Forged Black (FB)

NB: Only available with products in the Hardwick Heritage range.

Hardwick Heritage range is designed to emulate the finest traditions in British metalworking. The Forged Black finish has a slight sheen to replicate hardware fresh from the blacksmith's anvil; an ideal finish for traditional and heritage properties.



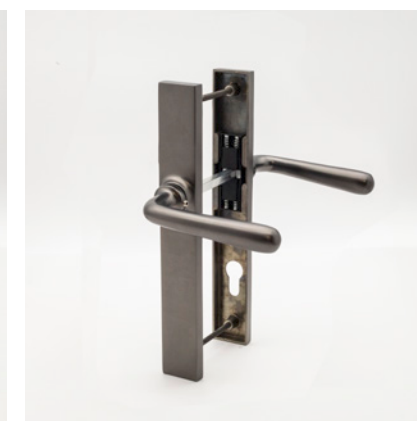
Lyndon

Classic Range



3050
Lyndon MPL Door Lever

- ▶ 92mm centres to suit multipoint locks.
- ▶ Dual-action spring cassette in backplate for longevity.
- ▶ Manufactured from Solid Brass and supplied with matching stainless steel fixings.



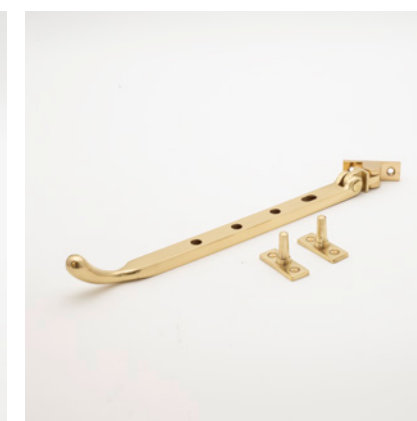
3051
Lyndon MPL/Passage Lever

- ▶ External side with blank plate/internal side with 92mm centres to suit multipoint locks.
- ▶ Dual-action spring cassette in backplate for longevity.
- ▶ Manufactured from Solid Brass and supplied with matching stainless steel fixings.



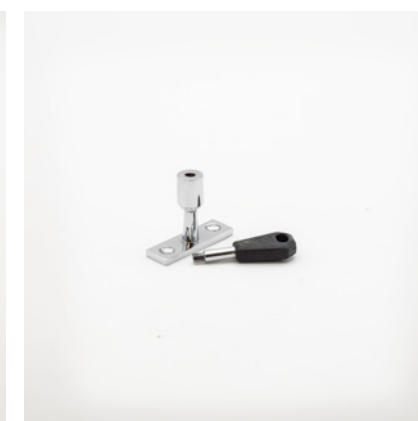
2050/2051
Lyndon Window Espag Handle

- ▶ Handed (view page 4 for handing info).
- ▶ Window espag handle with 40mm spindle.
- ▶ Lockable with hex key (supplied).
- ▶ Manufactured from Solid Brass and supplied with matching stainless steel fixings.



2073/2074/2075
Lyndon Window Stay

- ▶ Window stay available in 8"/202mm (2073), 10"/254mm (2074) and 12"/305mm (2075).
- ▶ Supplied with 2 stay-pins.
- ▶ Manufactured from Solid Brass and supplied with matching stainless steel fixings.



2999
Lockable Stay Pin

- ▶ Lockable stay pin to suit all Classic Range window stays.
- ▶ Lockable with hex key (supplied).
- ▶ Manufactured from Solid Brass and supplied with matching stainless steel fixings.

All Classic Range products are available in the following finishes: (page 5 for more info)

(AB)



(CP)



(PB)



(SB)

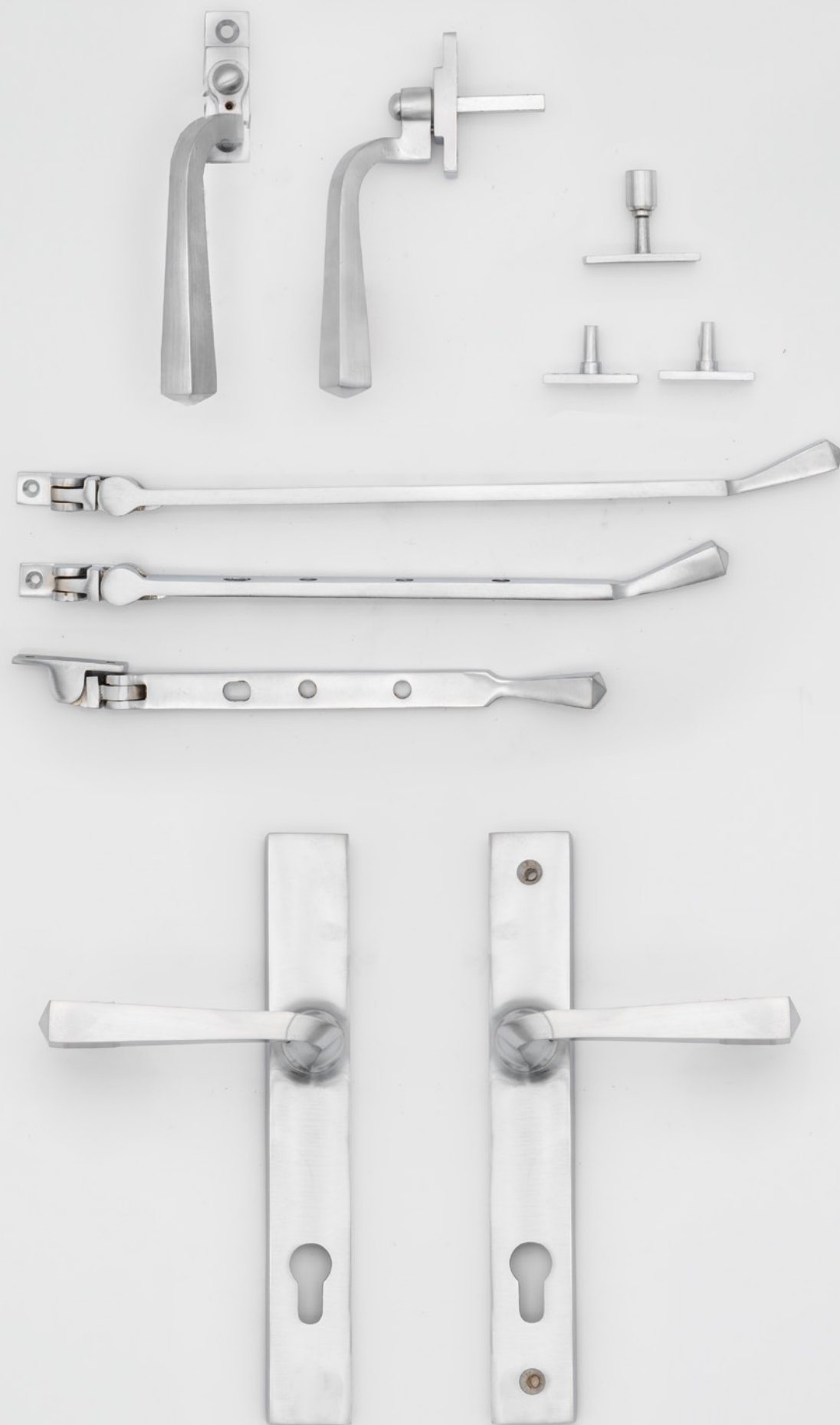


(SCP)



(TB)





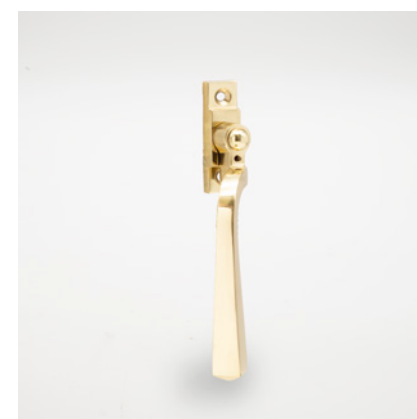
Burley

Classic Range



3200 Burley MPL Door Lever

- ▶ 92mm centres to suit multipoint locks.
- ▶ Dual-action spring cassette in backplate for longevity.
- ▶ Manufactured from Solid Brass and supplied with matching stainless steel fixings.



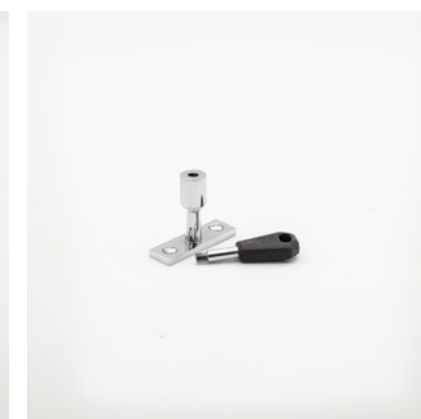
2200/2201 Burley Window Espag Handle

- ▶ Handed (view page 4 for handing info).
- ▶ Window espag handle with 40mm spindle.
- ▶ Lockable with hex key (supplied).
- ▶ Manufactured from Solid Brass and supplied with matching stainless steel fixings.



2210/2211/2212 Burley Window Stay

- ▶ Window stay available in 8"/202mm (2210), 10"/254mm (2211) and 12"/305mm (2212).
- ▶ Supplied with 2 stay-pins.
- ▶ Manufactured from Solid Brass and supplied with matching stainless steel fixings.



2999 Lockable Stay Pin

- ▶ Lockable stay pin to suit all Classic Range window stays.
- ▶ Lockable with hex key (supplied).
- ▶ Manufactured from Solid Brass and supplied with matching stainless steel fixings.

All Classic Range products are available in the following finishes: (page 5 for more info)

(AB)



(CP)



(PB)



(SB)



(SCP)



(TB)





Cottesmore / Other

Classic Range



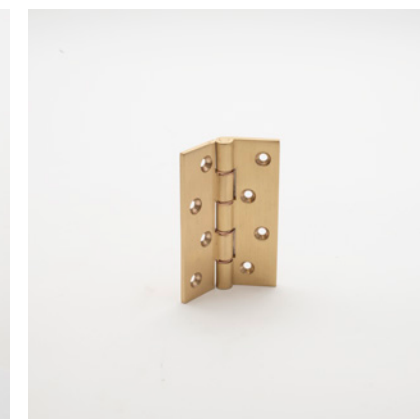
3100/3101
Cottesmore MPL Door Lever

- ▶ Handed (view page 4 for handing info).
- ▶ 92mm centres to suit multipoint locks.
- ▶ Dual-action spring cassette in backplate for longevity.
- ▶ Manufactured from Solid Brass and supplied with matching stainless steel fixings.



4401
Classic Surface Door Bolt 152mm

- ▶ Surface door bolt supplied with 3 keep options.
- ▶ Manufactured from Solid Brass and supplied with matching stainless steel fixings.



4050
Classic DPBW Hinge 102x67x4mm

- ▶ Traditional hinges with Double Phosphor Bronze Washers (DPBW) for longevity.
- ▶ Manufactured from Solid Brass and supplied with matching stainless steel fixings.

All Classic Range products are available in the following finishes: (page 5 for more info)

(AB)



(CP)



(PB)



(SB)



(SCP)



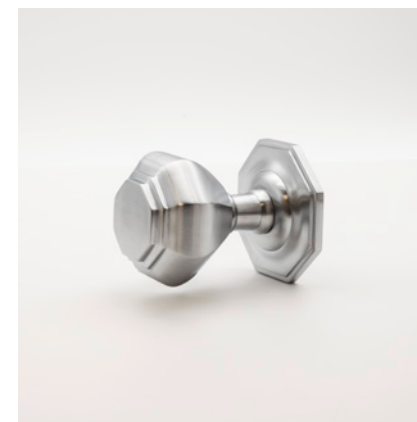
(TB)





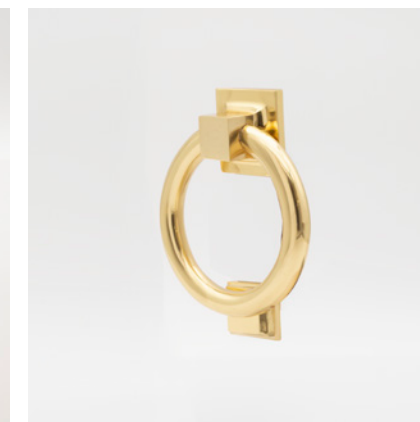
Ayston

Classic Range



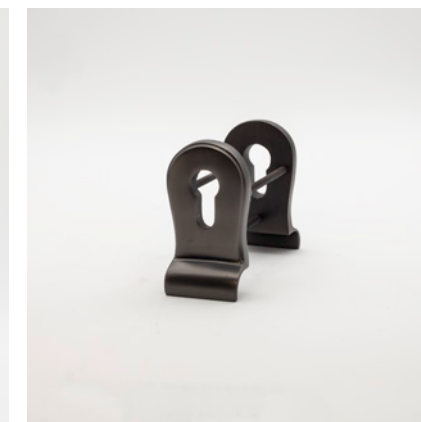
4110
Ayston Centre Door Knob

- ▶ Bolt-through centre door knob.
- ▶ Manufactured from Solid Brass and supplied with matching stainless steel fixings.



4210
Ayston Ring Door Knocker

- ▶ Stylish ring door knocker.
- ▶ Manufactured from Solid Brass and supplied with matching stainless steel fixings.



4005
Classic Euro Pull Set

- ▶ Back-to-back euro pull set.
- ▶ Manufactured from Solid Brass and supplied with matching stainless steel fixings.



4010
Classic Euro Profile Escutcheon

- ▶ Euro profile escutcheon with concealed fixing points.
- ▶ Manufactured from Solid Brass and supplied with matching stainless steel fixings.



4300
Classic External Letterplate

- ▶ External Letterplate 305x98mm.
- ▶ To suit aperture of 245x65mm (at joiners discretion).
- ▶ Manufactured from Solid Brass and supplied with matching stainless steel fixings.



4310
Classic Internal Letter-Tidy

- ▶ Internal Letter-tyd 300x84mm.
- ▶ To suit aperture of 245x65mm (at joiners discretion).
- ▶ Manufactured from Solid Brass and supplied with matching stainless steel fixings.

All Classic Range products are available in the following finishes: (page 5 for more info)

(AB)



(CP)



(PB)



(SB)



(SCP)



(TB)



Hambleton / Ryhall

Classic Range



4120
Hambleton Centre Door Knob

- ▶ Bolt-through centre door knob.
- ▶ Manufactured from Solid Brass and supplied with matching stainless steel fixings.



4200
Ryhall Doctors Door Knocker

- ▶ Classic doctors door knocker.
- ▶ Manufactured from Solid Brass and supplied with matching stainless steel fixings.



4005
Classic Euro Pull Set

- ▶ Back-to-back euro pull set.
- ▶ Manufactured from Solid Brass and supplied with matching stainless steel fixings.



4010
Classic Euro Profile Escutcheon

- ▶ Euro profile escutcheon with concealed fixing points.
- ▶ Manufactured from Solid Brass and supplied with matching stainless steel fixings.



4300
Classic External Letterplate

- ▶ External Letterplate 305x98mm.
- ▶ To suit aperture of 245x65mm (at joiners discretion).
- ▶ Manufactured from Solid Brass and supplied with matching stainless steel fixings.



4310
Classic Internal Letter-Tidy

- ▶ Internal Letter-tydy 300x84mm.
- ▶ To suit aperture of 245x65mm (at joiners discretion).
- ▶ Manufactured from Solid Brass and supplied with matching stainless steel fixings.

All Classic Range products are available in the following finishes: (page 5 for more info)

(AB)



(CP)



(PB)



(SB)



(SCP)



(TB)





Classic Sash Hardware

Classic Range



1075
Ball Knob Narrow Claw Fastener

- ▶ Lockable with hex key (supplied).
- ▶ Manufactured from Solid Brass and supplied with matching stainless steel fixings.



1077
Reeded Narrow Claw Fastener

- ▶ Lockable with hex key (supplied).
- ▶ Manufactured from Solid Brass and supplied with matching stainless steel fixings.



1080
Narrow Fitch Fastener

- ▶ Lockable with hex key (supplied).
- ▶ Manufactured from Solid Brass and supplied with matching stainless steel fixings.



1069
Modern Narrow Brighton Fastener

- ▶ Non-locking.
- ▶ Manufactured from Solid Brass and supplied with matching stainless steel fixings.



1090
Curved Neck Sash Lift

- ▶ Traditional cast sash lift.
- ▶ Manufactured from Solid Brass and supplied with matching stainless steel fixings.



1095
Sash Handle

- ▶ 120mm sash handle.
- ▶ Manufactured from Solid Brass and supplied with matching stainless steel fixings.



1085 (19/29)
Roller Stop Set (19mm/29mm)

- ▶ 2x stops, 2x strikes, 4x threaded inserts (colour matched) and key.
- ▶ Manufactured from Solid Brass and supplied with matching stainless steel fixings.



1087 (19/30)
Flush Stop Set (19mm/30mm)

- ▶ 2x stops, 2x strikes and key.
- ▶ Manufactured from Solid Brass and supplied with matching stainless steel fixings.



1050/1051
Ball Bearing Pulley (Square/Radius)

- ▶ 45mm wheel 80kg ball bearing sash pulley; square end (1050) and radius end (1051).
- ▶ Manufactured from Solid Brass and supplied with matching stainless steel fixings.

All Classic Range products are available in the following finishes: (page 5 for more info)

(AB)



(CP)



(PB)



(SB)



(SCP)



(TB)





3* High Security Euro Cylinders

Sentry+ euro cylinders are BSI 3* rated top security but still stocked in 4 different finishes to create that "stand-out" door.

With horizontal keyway and high security dimple-cut keys, Sentry+ euro cylinders are available in key-key and key-thumbturn versions. We also have workshop facilities to offer keyed-alike cylinders if there are multiple doors on the same property.

Keys are protected with the unique code supplied with each cylinder meaning that no keys can be copied without the owner's permission.



Key/Key 3* Euro Cylinder Sizes

#	FINISH	OVERALL LENGTH	CYLINDER SPLIT	
			KEY	KEY
HKS3535KKAB	Antique Brass	70mm	35mm	35mm
HKS3545KKAB	Antique Brass	80mm	35mm	45mm
HKS4040KKAB	Antique Brass	80mm	40mm	40mm
HKS4545KKAB	Antique Brass	90mm	45mm	45mm
HKS3535KKFB	Black	70mm	35mm	35mm
HKS3545KKFB	Black	80mm	35mm	45mm
HKS4040KKFB	Black	80mm	40mm	40mm
HKS4545KKFB	Black	90mm	45mm	45mm
HKS3535KKSCP	Satin Chrome	70mm	35mm	35mm
HKS3545KKSCP	Satin Chrome	80mm	35mm	45mm
HKS4040KKSCP	Satin Chrome	80mm	40mm	40mm
HKS4545KKSCP	Satin Chrome	90mm	45mm	45mm
HKS3535KKSB	Satin Brass	70mm	35mm	35mm
HKS3545KKSB	Satin Brass	80mm	35mm	45mm
HKS4040KKSB	Satin Brass	80mm	40mm	40mm
HKS4545KKSB	Satin Brass	90mm	45mm	45mm

Key/Turn 3* Euro Cylinder Sizes

#	FINISH	OVERALL LENGTH	CYLINDER SPLIT	
			KEY	TURN
HKS3535KTAB	Antique Brass	70mm	35mm	35mm
HKS4040KTAB	Antique Brass	80mm	40mm	40mm
HKS4545KTAB	Antique Brass	90mm	45mm	45mm
HKS3535KTFB	Black	70mm	35mm	35mm
HKS4040KTFB	Black	80mm	40mm	40mm
HKS4545KTFB	Black	90mm	45mm	45mm
HKS3535KTSCP	Satin Chrome	70mm	35mm	35mm
HKS4040KTSCP	Satin Chrome	80mm	40mm	40mm
HKS4545KTSCP	Satin Chrome	90mm	45mm	45mm
HKS3535KTSB	Satin Brass	70mm	35mm	35mm
HKS4040KTSB	Satin Brass	80mm	40mm	40mm
HKS4545KTSB	Satin Brass	90mm	45mm	45mm

Add KA on end of code for keyed-alike.



Burley

Heritage Range



H600
Burley MPL Door Lever

- ▶ 92mm centres to suit multipoint locks.
- ▶ Dual-action spring cassette in backplate for longevity.
- ▶ Manufactured from Solid Brass and supplied with matching stainless steel fixings.



H601
Burley MPL/Passage Lever

- ▶ External side with blank plate/internal side with 92mm centres to suit multipoint locks.
- ▶ Dual-action spring cassette in backplate for longevity.
- ▶ Manufactured from Solid Brass and supplied with matching stainless steel fixings.



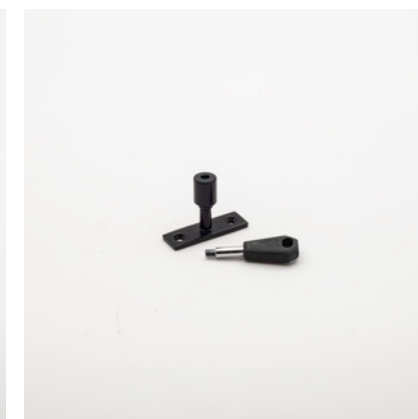
H520/H521
Burley Window Espag Fastener

- ▶ Handed (view page 4 for handing info).
- ▶ Window espag handle with 40mm spindle.
- ▶ Lockable with hex key (supplied).
- ▶ Manufactured from Solid Brass and supplied with matching stainless steel fixings.



H530/H531/H532
Burley Window Stay

- ▶ Window stay available in 8"/202mm (H530), 10"/254mm (H531) and 12"/305mm (H532).
- ▶ Supplied with 2 stay-pins.
- ▶ Manufactured from Solid Brass and supplied with matching stainless steel fixings.



H599
Lockable Stay Pin

- ▶ Lockable stay pin to suit all Heritage Range window stays.
- ▶ Lockable with hex key (supplied).
- ▶ Manufactured from Solid Brass and supplied with matching stainless steel fixings.

All Heritage Range products are available in Forged Black (page 5 for more info)

(FB)





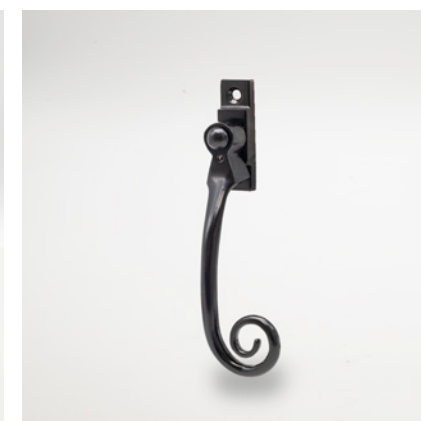
Brooke / Curlytail / Peardrop

Heritage Range



**H610
Brooke MPL Door Lever**

- ▶ 92mm centres to suit multipoint locks.
- ▶ Dual-action spring cassette in backplate for longevity.
- ▶ Manufactured from Solid Brass and supplied with matching stainless steel fixings.



**H500/H501
Curlytail Window Espag Fastener**

- ▶ Handed (view page 4 for handing info).
- ▶ Window espag handle with 40mm spindle.
- ▶ Lockable with hex key (supplied).
- ▶ Manufactured from Solid Brass and supplied with matching stainless steel fixings.



**H550/H551
Peardrop Window Espag Fastener**

- ▶ Handed (view page 4 for handing info).
- ▶ Window espag handle with 40mm spindle.
- ▶ Lockable with hex key (supplied).
- ▶ Manufactured from Solid Brass and supplied with matching stainless steel fixings.



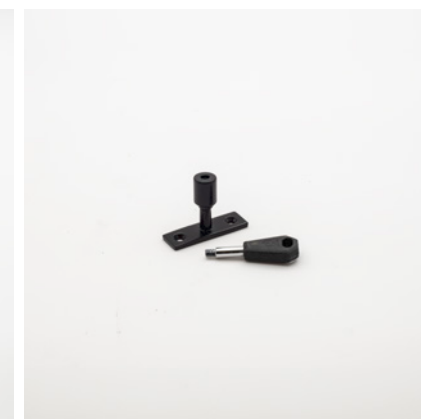
**H510/H511/H512
Curlytail Window Stay**

- ▶ Window stay available in 8"/202mm (H510), 10"/254mm (H511) and 12"/305mm (H512)
- ▶ Supplied with 2 stay-pins.
- ▶ Manufactured from Solid Brass and supplied with matching stainless steel fixings.



**H560/H561/H562
Peardrop Window Stay**

- ▶ Window stay available in 8"/202mm (H560), 10"/254mm (H561) and 12"/305mm (H562)
- ▶ Supplied with 2 stay-pins.
- ▶ Manufactured from Solid Brass and supplied with matching stainless steel fixings.



**H599
Lockable Stay Pin**

- ▶ Lockable stay pin to suit all Heritage Range window stays.
- ▶ Lockable with hex key (supplied).
- ▶ Manufactured from Solid Brass and supplied with matching stainless steel fixings.

All Heritage Range products are available in Forged Black: (page 5 for more info)

(FB)





Ayston

Heritage Range



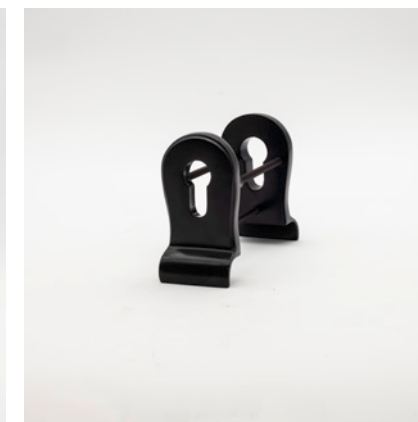
H710
Ayston Centre Door Knob

- ▶ Bolt-through centre door knob.
- ▶ Manufactured from Solid Brass and supplied with matching stainless steel fixings.



H720
Ayston Ring Door Knocker

- ▶ Stylish ring door knocker.
- ▶ Manufactured from Solid Brass and supplied with matching stainless steel fixings.



H700
Heritage Euro Pull Set

- ▶ Back-to-back euro pull set.
- ▶ Manufactured from Solid Brass and supplied with matching stainless steel fixings.



H705
Heritage Euro Profile Escutcheon

- ▶ Euro profile escutcheon with concealed fixing points.
- ▶ Manufactured from Solid Brass and supplied with matching stainless steel fixings.



H731
Heritage Sleeved Letterbox

- ▶ Fully weathersealed with brush on internal side for maximum performance.
- ▶ 4x bolt-through fixings to suit doors up to 65mm thick.

All Heritage Range products are available in Forged Black: (page 5 for more info)

(FB)





FINEST BRASSWARE TO ENHANCE
QUALITY DOORS AND WINDOWS

www.hardwick.co.uk
